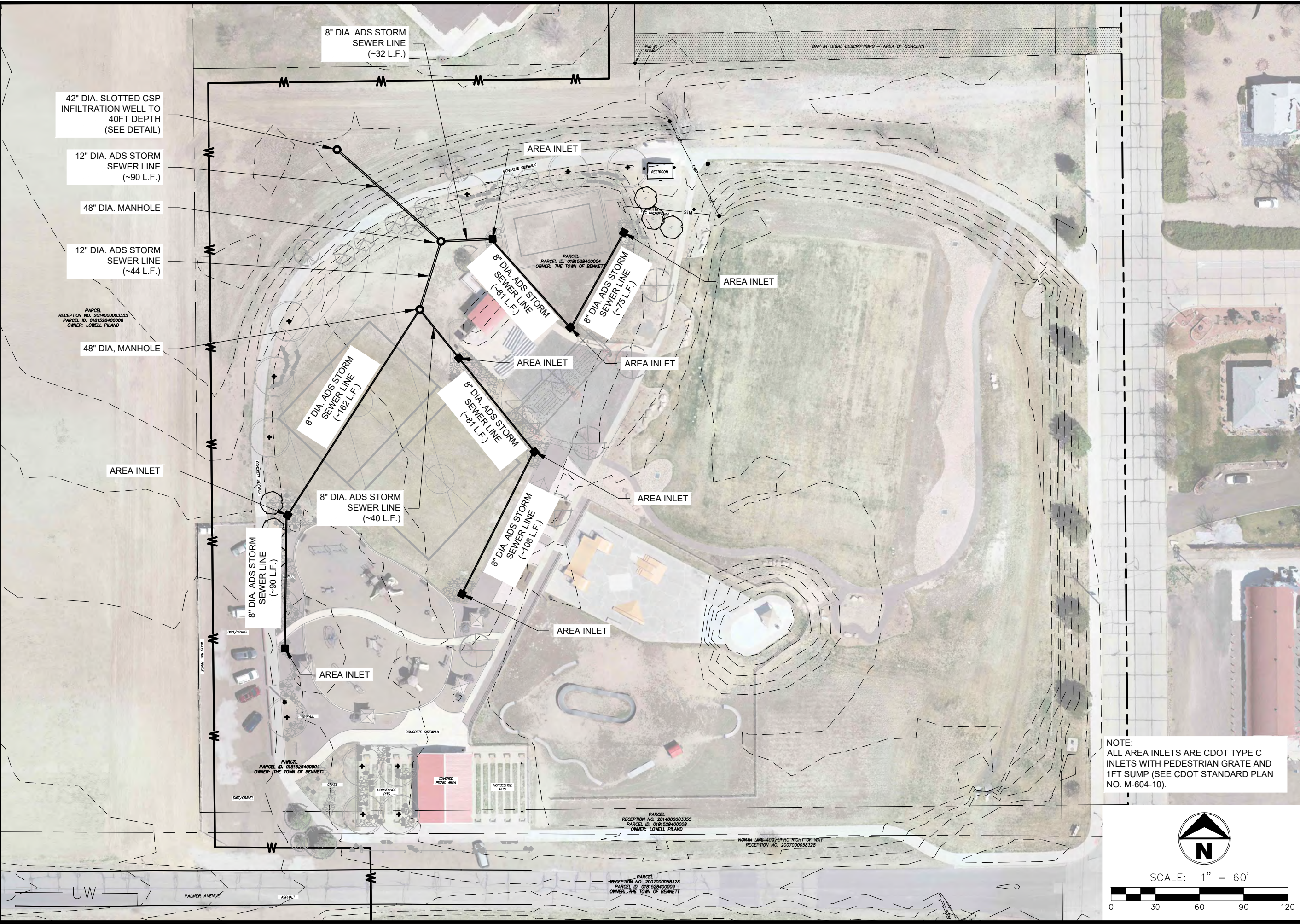
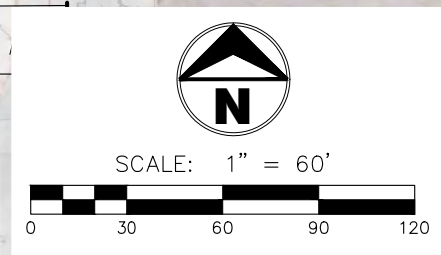


Plot Date: 05/18/22-2:28pm, Plotted by:mtkld, Drawing Path: N:\TERRAMAX\Bennett\Trupp_Park\Storm_Sewer_Design\Plan_Set\2022\Drawing Name:Trupp_Park_2022_Site_Plan_exhibit.dwg



NOTE:
 ALL AREA INLETS ARE CDOT TYPE C
 INLETS WITH PEDESTRIAN GRATE AND
 1FT SUMP (SEE CDOT STANDARD PLAN
 NO. M-604-10).



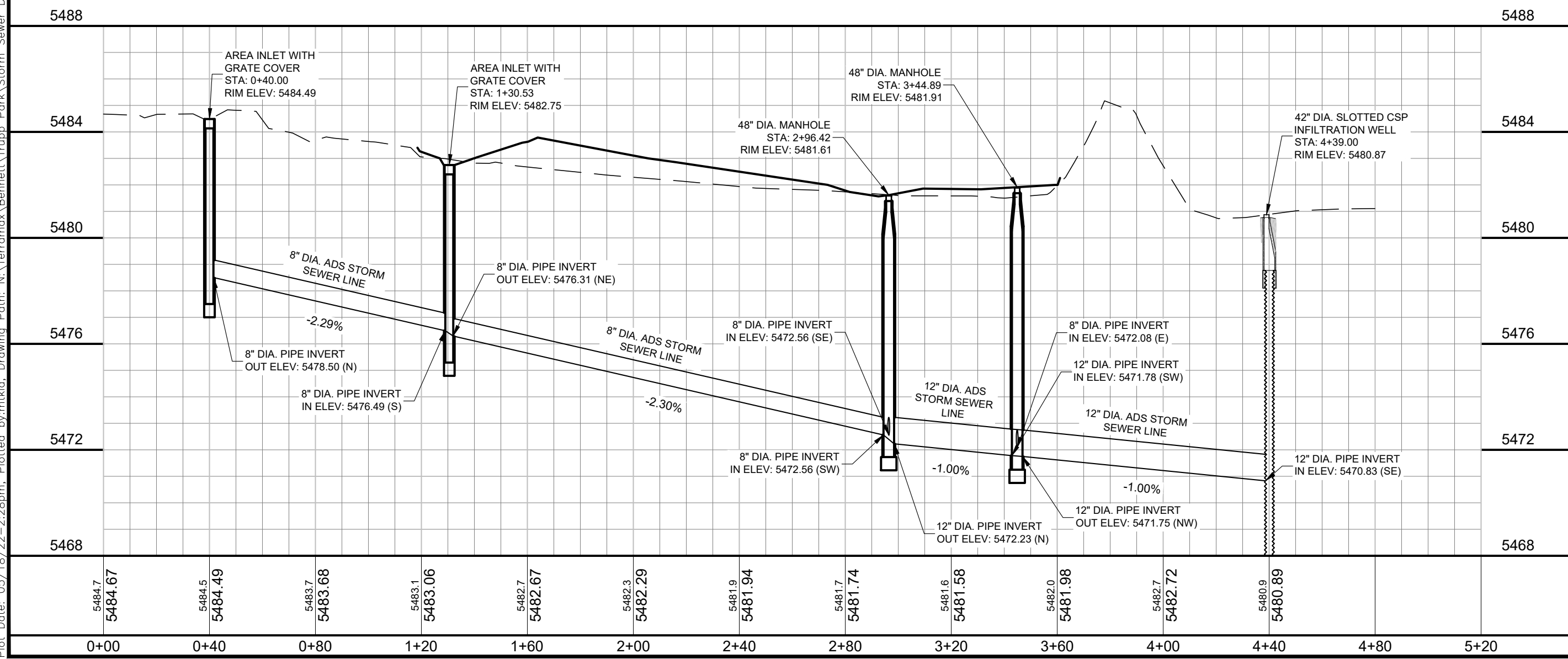
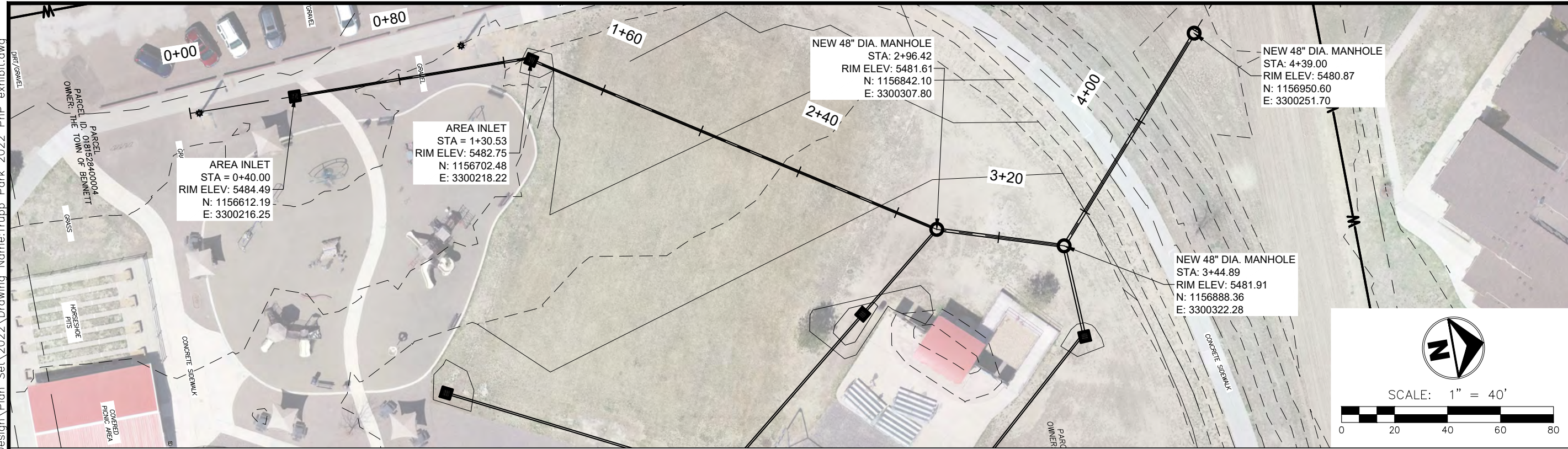
TERRAMAX, INC.
 CONSULTING ♦ ENGINEERING

4220 GOLF VISTA DRIVE
 LOVELAND, COLORADO 80537
 DANGIROUX@TERRAMAX.US
 (303) 929-3194

TOWN OF BENNETT
2022 TRUPP PARK STORM SEWER
SITE PLAN

Project No.	728
Date	18/MAY/22
By	LD
Scale	1" = 60'
Sheet	1

Plot Date: 05/18/22 - 2:28pm, Plotted by: mtkid, Drawing Path: N:\TERRAMAX\Bennett\Trupp_Park\Storm_Sewer_Design\Plan_Sets\2022\Bennett\Trupp_Park_2022_PnP_exhibit.dwg

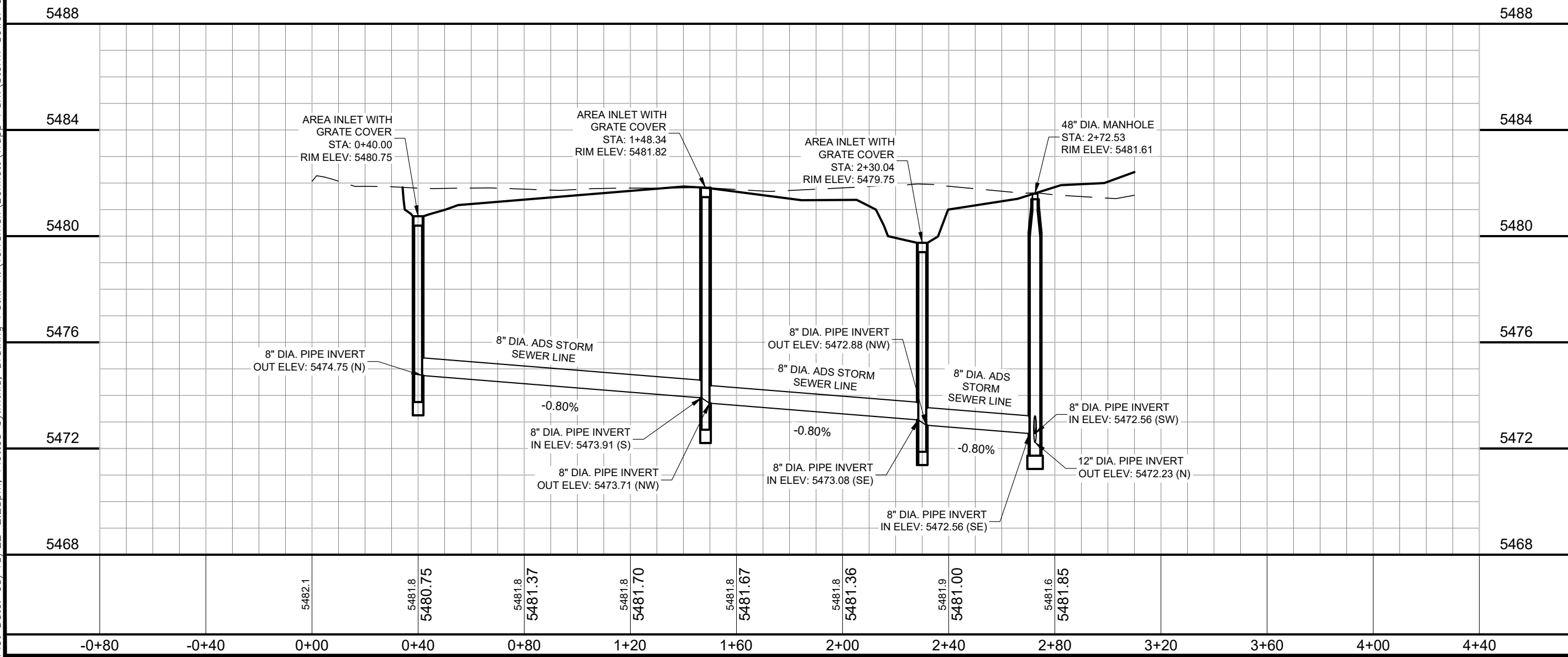
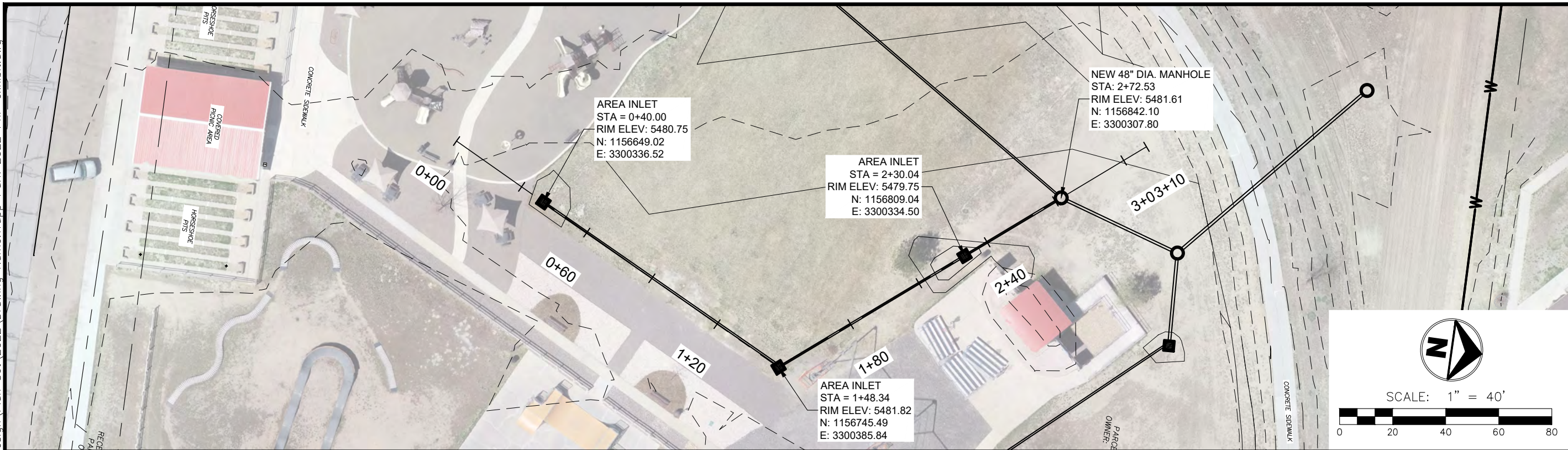


TERRAMAX, INC.
 CONSULTING ENGINEERING
 4220 GOLF VISTA DRIVE
 LOVELAND, COLORADO 80537
 DANGIROUX@TERRAMAX.US
 (303) 929-3194

TOWN OF BENNETT
2022 TRUPP PARK STORM SEWER
 LINE A PLAN AND PROFILE

Project No. 728
 Date 18/MAY/22
 By LD
 Scale 1"=40'H/4'V
 Sheet **2**

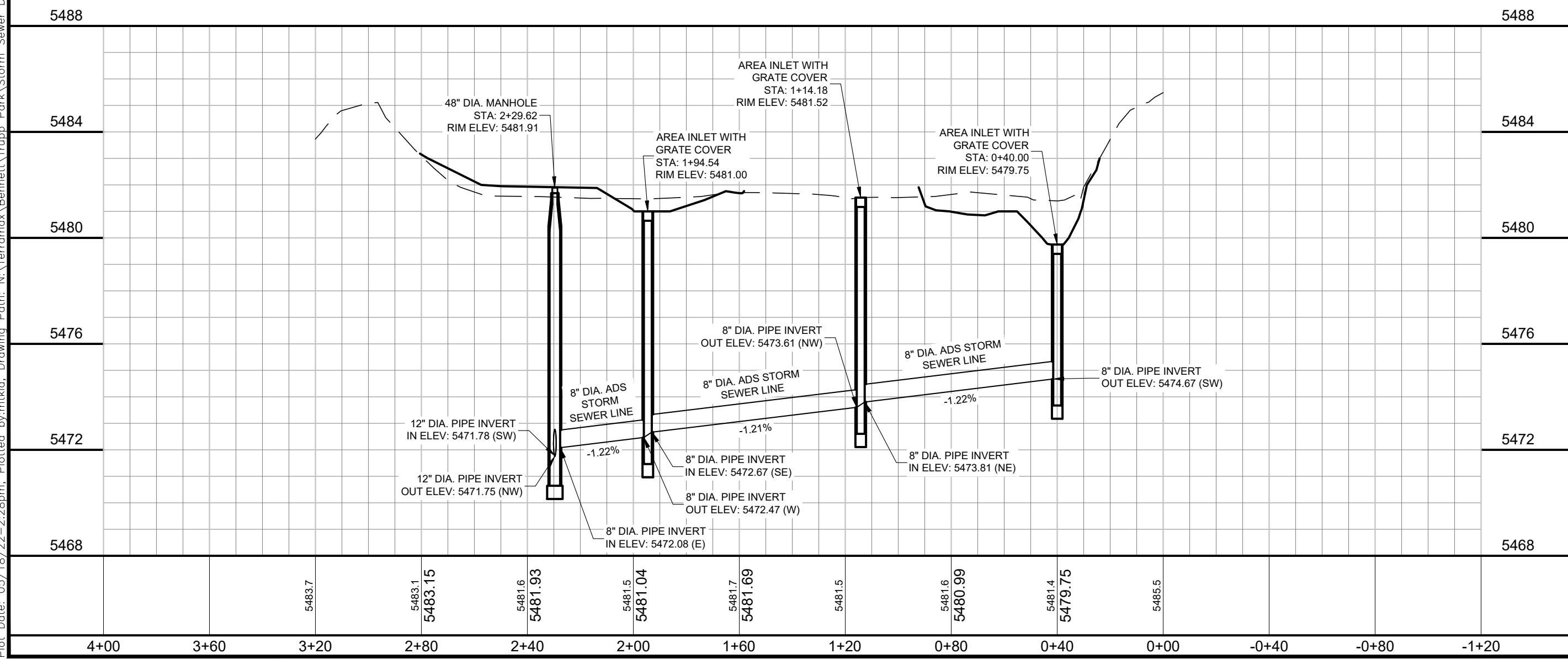
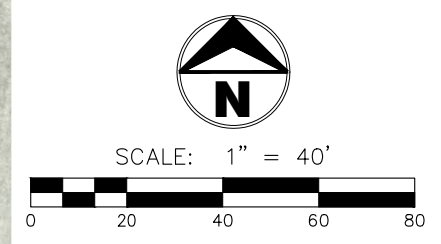
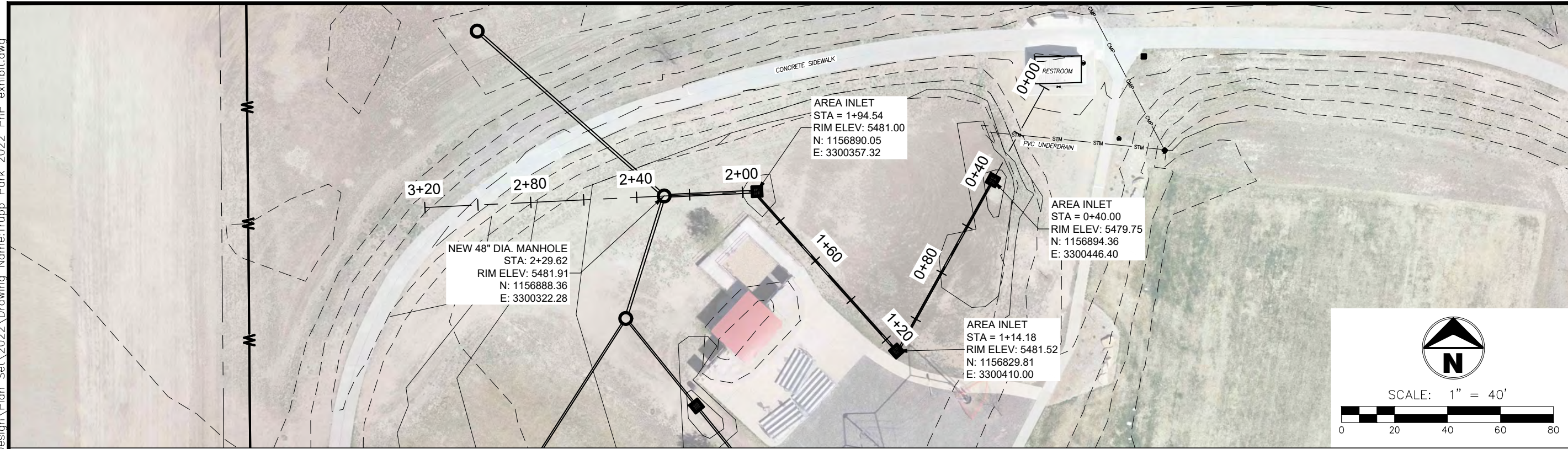
Plot Date: 05/18/22 - 2:28pm, Plotted by: mtkid, Drawing Path: N:\TERRAMAX\Bennett\Trupp_Park\Storm_Sewer_Design\Plan_Set\2022\Drawing Name: Trupp_Park_2022_PnP_exhibit.dwg



TOWN OF BENNETT
2022 TRUPP PARK STORM SEWER
LINE B PLAN AND PROFILE

Project No.	728
Date	18/MAY/22
By	LD
Scale	1"=40'H/4'V
Sheet	3

Plot Date: 05/18/22 - 2:28pm, Plotted by: mtkid, Drawing Path: N:\TERRAMAX\Bennett\Trupp_Park\Storm_Sewer_Design\Plan_Set\2022\Drawing Name: Trupp_Park_2022_PnP_exhibit.dwg

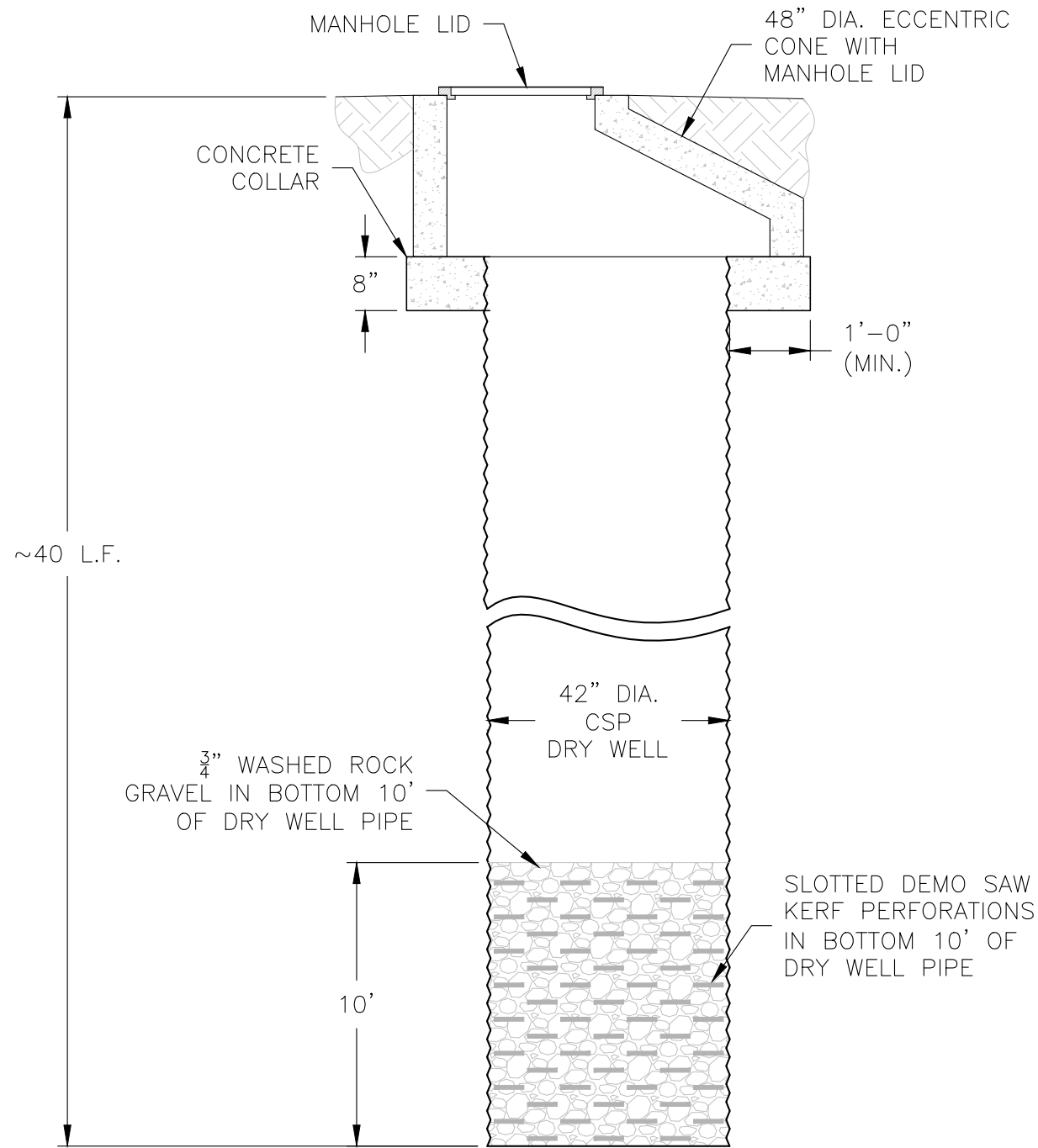


TERRAMAX, INC.
 CONSULTING ENGINEERING
 4220 GOLF VISTA DRIVE
 LOVELAND, COLORADO 80537
 DANGIROUX@TERRAMAX.US
 (303) 929-3194

TOWN OF BENNETT
2022 TRUPP PARK STORM SEWER
 LINE C PLAN AND PROFILE

Project No.	728
Date	18/MAY/22
By	LD
Scale	1"=40'H/4'V
Sheet	4

Plot Date: 05/18/22 - 2:29pm, Plotted by: mtkid, Drawing Path: N:\TERRAMAX\Bennett\Trupp_Park\Storm_Sewer_Design\Plan_Set\2022\Drawing_Name:Trupp_Park_Details_2022.dwg

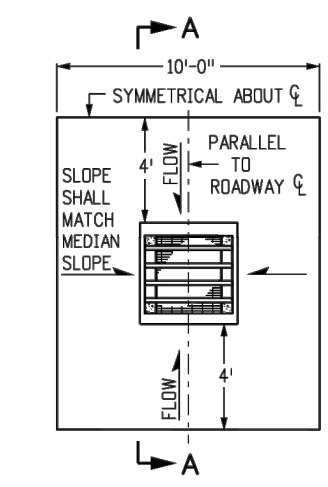


INFILTRATION WELL DETAL
NOT TO SCALE

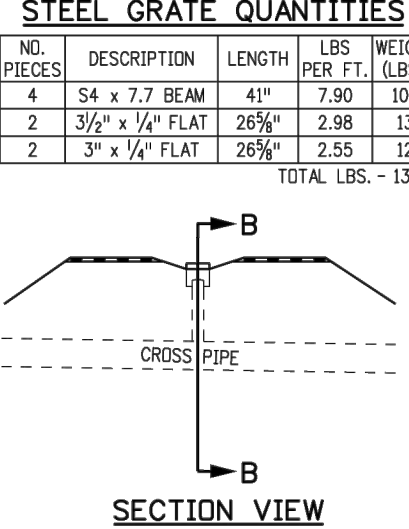
TOWN OF BENNETT
2022 TRUPP PARK STORM SEWER
DETAIL SHEET
(1)

Project No.	728
Date	18/MAY/22
By	LD
Scale	AS NOTED
Sheet	5

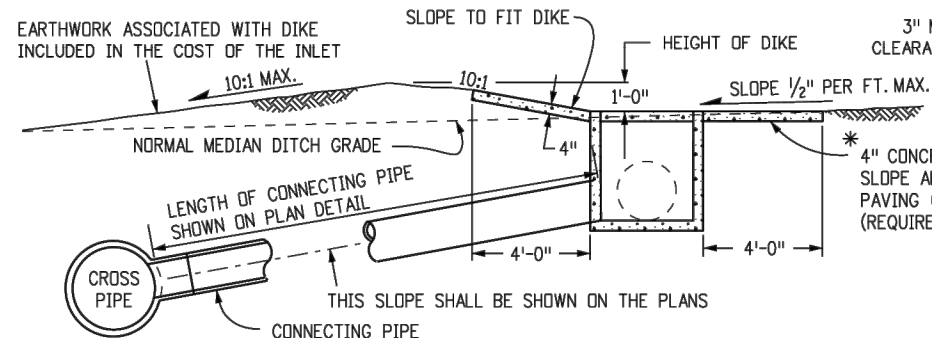
Plot Date: 05/18/22 2:29pm, Plotted by: mtKid, Drawing Path: N:\TERRAMAX\Bennett\Trupp_Park\Storm Sewer Design\Plan Set\2022\Drawing Name: Trupp_Park_Details_2022.dwg



INLET WITH DITCH PAVING



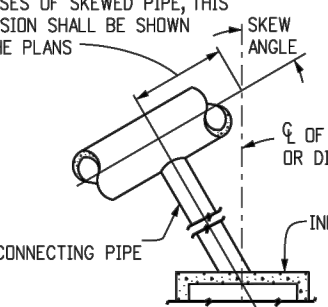
SECTION VIEW



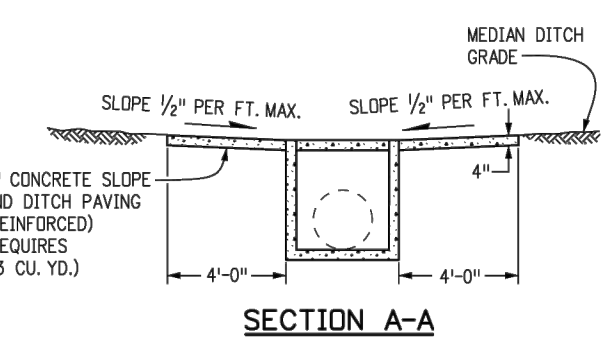
SECTION A-A

SECTION B-B

INLET CONNECTED TO A CROSS PIPE



INLET CONNECTED TO A SKEWED CROSS PIPE

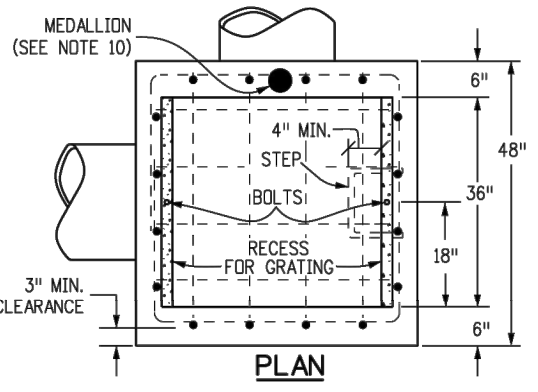


SECTION A-A

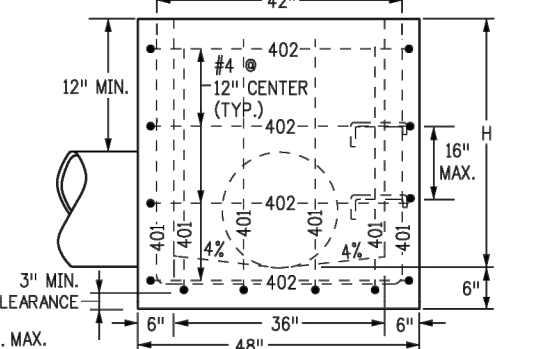
INLET AT BOTTOM OF VERTICAL CURVE (FLOW FROM TWO DIRECTIONS)

STEEL GRATE QUANTITIES

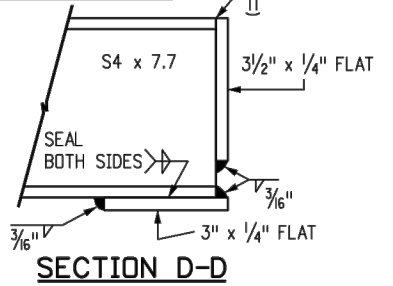
NO. PIECES	DESCRIPTION	LENGTH	LBS PER FT.	WEIGHT (LBS.)
4	S4 x 7.7 BEAM	41"	7.90	106
2	3 1/2" x 1/4" FLAT	26 5/8"	2.98	13
2	3" x 1/4" FLAT	26 5/8"	2.55	12
TOTAL LBS. - 131				



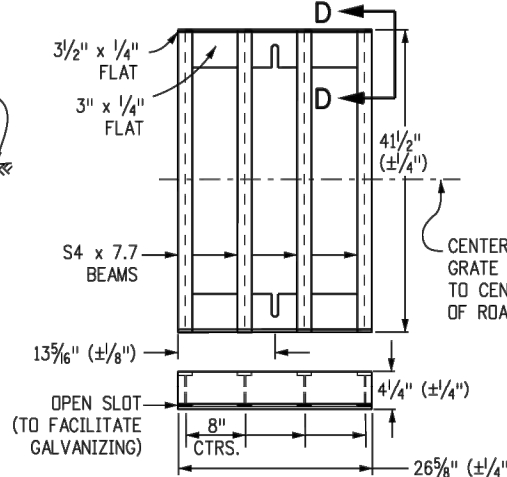
PLAN



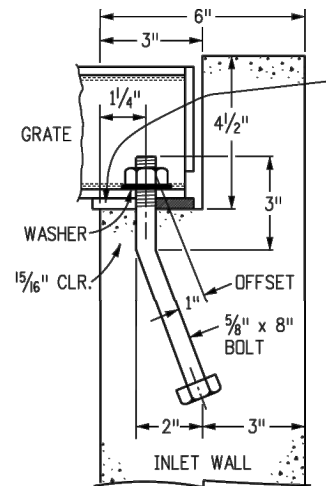
ELEVATION CONCRETE INLET



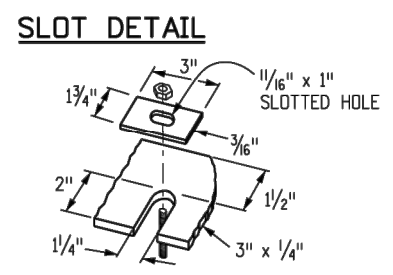
SECTION D-D



STANDARD INLET GRATE

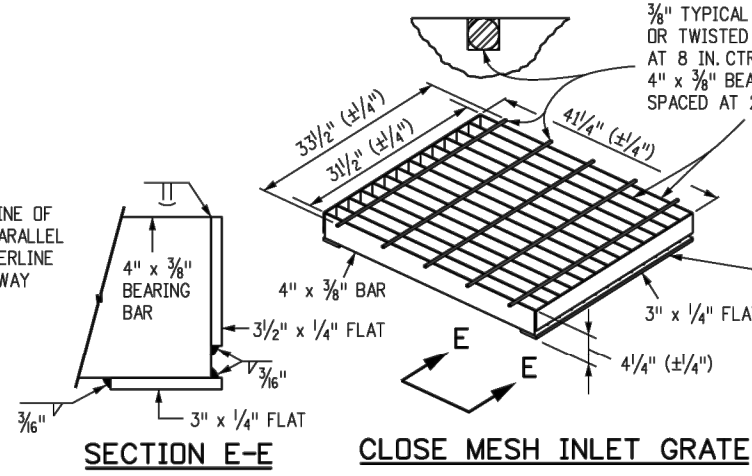


GRATE INSTALLATION DETAIL



ALTERNATE SLOT AND HOLD DOWN PLATE DETAIL

- GENERAL NOTES**
- INLET TYPE C IS NOT HS-20 RATED AND SHALL NOT BE PLACED IN PAVED ROADWAYS. THIS INLET SHALL BE USED ONLY OUTSIDE PAVED ROADWAYS.
 - CONCRETE SHALL BE CLASS B. INLET MAY BE CAST-IN-PLACE OR PRECAST.
 - REINFORCING BARS SHALL BE GRADE 60, EPOXY COATED, AND DEFORMED #4, AND SHALL HAVE A MIN. 2 INCH CLEARANCE. CUT OR BEND AROUND PIPES AS REQUIRED.
 - CONCRETE SLOPE AND DITCH PAVING SHALL BE IN ACCORDANCE WITH SECTION 507. REINFORCEMENT FOR CONCRETE SLOPE PAVING SHALL BE 6 X 6 - W1.4 X W1.4 OR 6 X 6 - W2.1 X W2.1.
 - STRUCTURAL STEEL FOR GRATES AND GRATE INSTALLATION HARDWARE SHALL BE GALVANIZED, AND SHALL BE IN ACCORDANCE WITH SUBSECTION 712.06.
 - THE STANDARD INLET GRATES SHALL BE USED ON ALL TYPE C INLETS UNLESS CLOSE MESH INLET GRATES ARE SPECIFIED ON THE PLANS.
 - CLOSE MESH GRATES ARE RECOMMENDED WHERE FOOT TRAFFIC OR BICYCLE ROUTES ARE IN CLOSE PROXIMITY TO GRATE. THIS GRATE IS NOT ADA COMPLIANT OR BICYCLE FRIENDLY AND SHALL NOT BE PLACED DIRECTLY IN SIDEWALKS, CROSSWALKS OR BIKE PATHS.
 - STEPS SHALL BE PROVIDED WHEN INLET DIMENSION "H" IS EQUAL TO OR GREATER THAN 3 FEET - 6 INCHES AND SHALL CONFORM TO AASHTO M 199.
 - SEE STANDARD PLAN M-604-11, FOR REINFORCEMENT AROUND THE PIPE OPENING.
 - ALL INLETS SHALL HAVE A 4 INCH DIA METAL MEDALLION WITH A "NO DUMPING DRAINS TO STREAM" MESSAGE ON IT. THE MEDALLION SHALL HAVE A FISH SYMBOL WITH A BLUE BACKGROUND. IT SHALL BE FIRMLY ATTACHED TO THE TOP OF THE INLET WITH A PERMANENT FASTENER.



SECTION E-E CLOSE MESH INLET GRATE

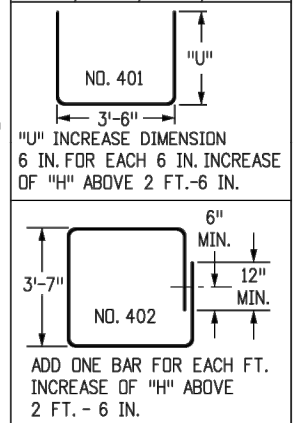
QUANTITIES FOR ONE INLET

H	CONCRETE (CU. YDS.)	STEEL (LBS.)	NO. STEPS REQ'D.
2'-6"	1.0	76	0
3'-0"	1.1	81	0
3'-6"	1.2	97	0
4'-0"	1.3	102	1
4'-6"	1.5	117	2
5'-0"	1.6	123	2
5'-6"	1.7	138	2
6'-0"	1.9	143	3
6'-6"	2.0	159	3
7'-0"	2.1	164	3
7'-6"	2.2	180	4
8'-0"	2.4	185	4
8'-6"	2.5	200	4
9'-0"	2.6	206	5
9'-6"	2.8	221	5
10'-0"	2.9	236	6
11'-6"	3.3	252	6

PIPE INSIDE DIAMETER SHALL BE 30 IN. OR LESS. CONCRETE AND STEEL QUANTITIES ARE FOR AN ENTIRE INLET BEFORE DEDUCTION FOR VOLUME OCCUPIED BY PIPE. WEIGHT OF STEEL INCLUDES A RING FOR THE MAXIMUM PIPE DIAMETER.

BAR LIST FOR H = 2 FT.-6 IN. AND BENDING DIAGRAM

MARK	NO. REQ'D.	HEIGHT	LENGTH
401	2	2'-2 1/2"	8'-0"
401	6	2'-7"	8'-8"
402	4	"U"	15'-4"



402 BARS SHALL BE EQUALLY SPACED FROM EACH OTHER.

TERRAMAX, INC.
CONSULTING ENGINEERING
4220 GOLF VISTA DRIVE
LOVELAND, COLORADO 80537
DANGIROUX@TERRAMAX.US
(303) 929-3194

TOWN OF BENNETT
2022 TRUPP PARK STORM SEWER
DETAIL SHEET (2)

Computer File Information

Creation Date: 07/31/19
Designer Initials: JBK
Last Modification Date: 07/31/19
Detailer Initials: LTA
CAD Ver.: MicroStation V8 Scale: Not to Scale Units: English

Sheet Revisions

Date:	Comments
(R-X)	
(R-X)	
(R-X)	
(R-X)	

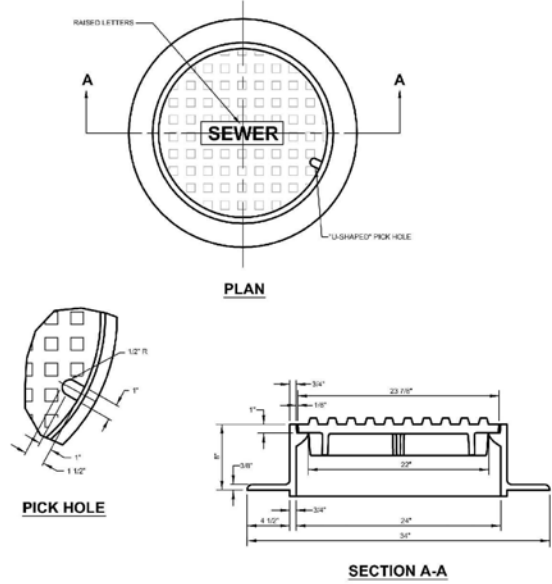
Colorado Department of Transportation
2829 West Howard Place
CDOT HQ, 3rd Floor
Denver, CO 80204
Phone: 303-757-9021 FAX: 303-757-9868
Project Development Branch **JBK**

INLET, TYPE C
Issued by the Project Development Branch: July 31, 2019

STANDARD PLAN NO.
M-604-10
Standard Sheet No. 1 of 1
Project Sheet Number:

Project No. 728
Date 18/MAY/22
By LD
Scale AS NOTED
Sheet **6**

Plot Date: 05/18/22 - 2:29pm, Plotted by: mtkid, Drawing Path: N:\TERRAMAX\Bennett\Trupp_Park\Storm_Sewer_Design\Plan_Set\2022\Drawing_Name:Trupp_Park_2022_MH_Details_exhibit.dwg

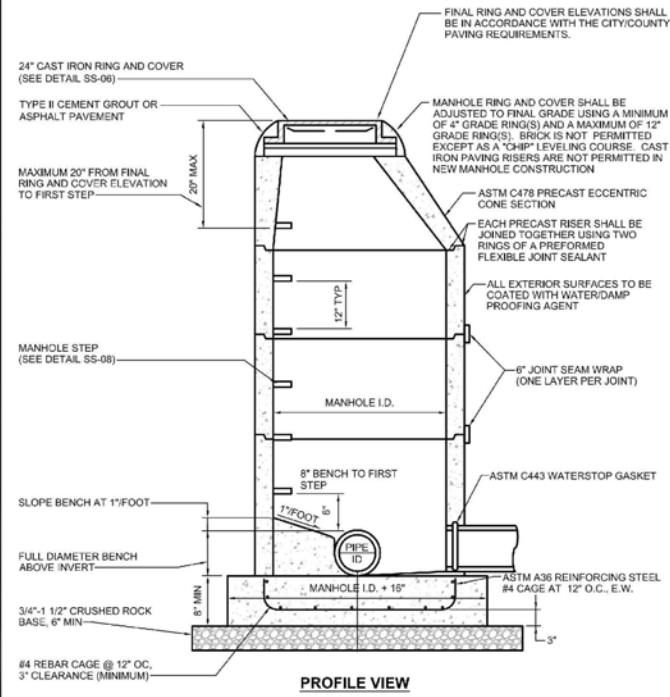


- NOTE:
- CASTING SPECIFICATIONS: ASTM A-46 WITH A MINIMUM TENSILE STRENGTH OF 35 KSI (CLASS 35B).
 - ALUMINUM COVERS WITH CAM LOCKS ARE REQUIRED IN ALL EASEMENTS AND DRAINAGE WAYS. ALUMINUM CASTING SHALL CONFORM TO ASTM B-26 WITH A MINIMUM TENSILE STRENGTH OF 23 KSI.
 - CASTINGS SHALL BE AS SPECIFIED BELOW OR EQUAL:

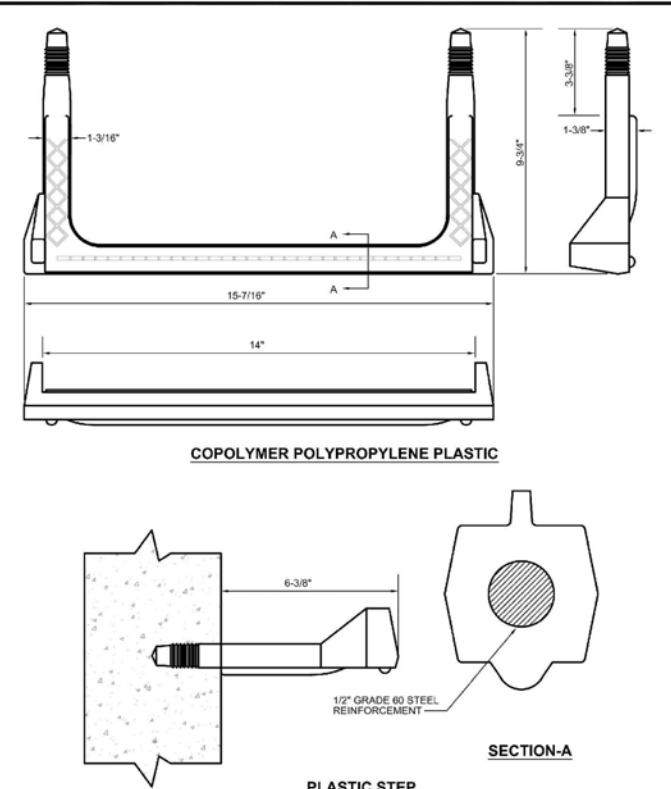
MANUFACTURER	CAT. #
NEENAH	R-1700
CASTINGS, INC.	MH-400-24 C.I.

REVISED		SCALE	
BY	DATE	NOT TO SCALE	
		FEBRUARY 2016	
		SHEET	DRAWING NO.
		1 OF 1	SS-06

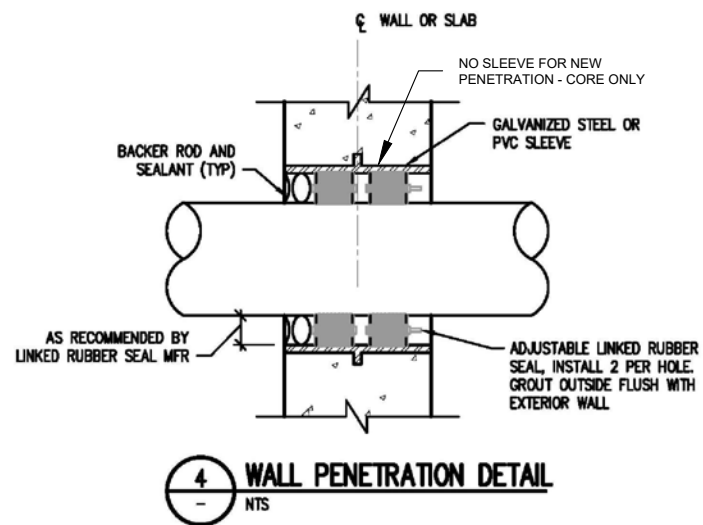
COPYRIGHT © 2016 SOUTHGATE WATER & SANITATION DISTRICTS



REVISED		SCALE	
BY	DATE	NOT TO SCALE	
		FEBRUARY 2016	
		SHEET	DRAWING NO.
		1 OF 2	SS-03



REVISED		SCALE	
BY	DATE	NOT TO SCALE	
		FEBRUARY 2016	
		SHEET	DRAWING NO.
		1 OF 1	SS-09



NOTE:
TO MAINTAIN THE INTEGRITY OF THE INTERIOR COATING SYSTEM, LEAVE NO EXPOSED CONCRETE.

TERRAMAX, INC.
CONSULTING ♦ ENGINEERING

4220 GOLF VISTA DRIVE
LOVELAND, COLORADO 80537
DANGIROUX@TERRAMAX.US
(303) 929-3194

TOWN OF BENNETT
2022 TRUPP PARK STORM SEWER
MANHOLE DETAILS

Project No.	728
Date	18/MAY/22
By	LD
Scale	As Noted
Sheet	7