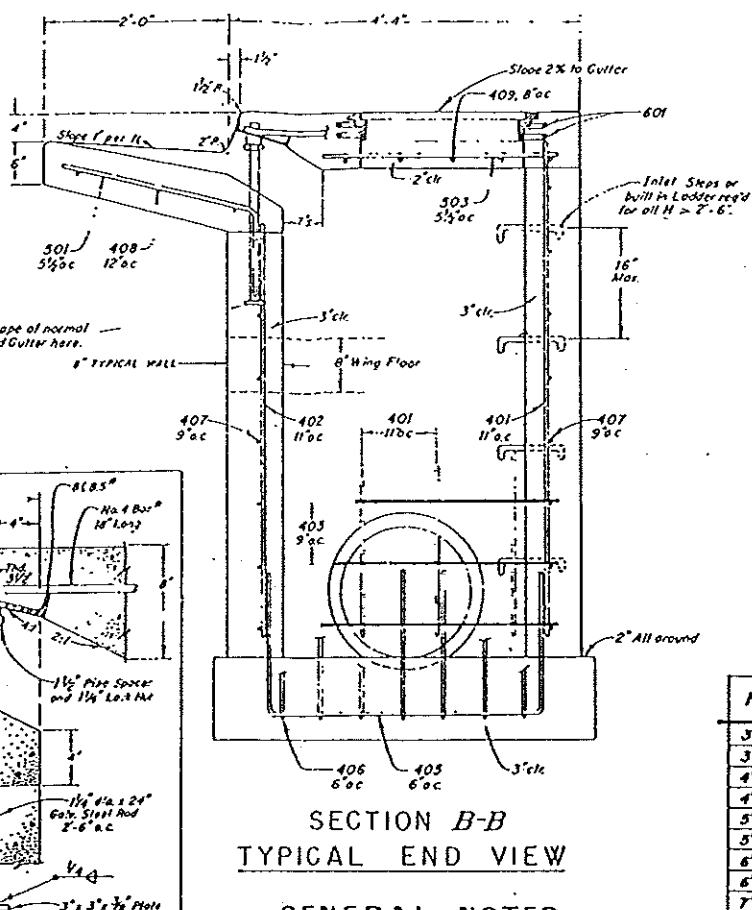


TYPICAL PLAN VIEW



SECTION B-B TYPICAL END VIEW

GENERAL NOTES

CURB FACE ASSEMBLY, Place Entire Assembly Before Pouring Concrete.

All work shall be done in accordance with the Standard Specifications applicable to the project.

Concrete shall be Class A.

Concrete walls shall be formed on both sides and shall be 8" thick.

Inlet Slopes shall be as shown on the applicable Division "M" Standard.

Curb Face Assembly shall be galvanized after welding.

Exposed concrete corners shall be beveled to all faces. Curb and Gutter corners shall be finished to match the existing curb and gutter beyond the Transition Gutter.

All reinforcing bars shall be lapped with bar designation and station number.

Reinforcing bars shall be deformed and shall be of intermediate grade steel.

Dimensions and weights of Typical Manhole Ring and Cover are nominal.

All bars shall be a minimum 2" clear.

Since pipe entries into the inlet are variable, the dimensions shown are typical. Actual dimensions and quantities for concrete and reinforcement shall be as required in the work. Quantities include volumes occupied by pipes.

Structural Steel shall be galvanized and shall conform to the requirements of Section 509.

TABLE ONE - BAR LIST FOR CURB INLETS, TYPE R

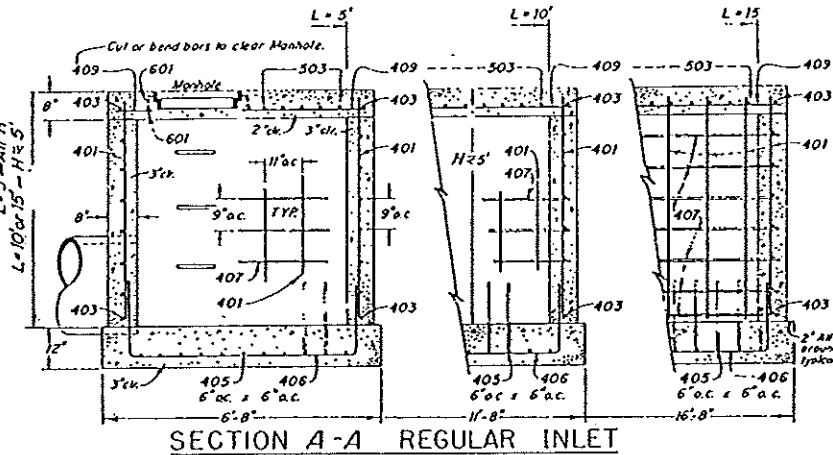
MARK	DIA. in.	a.c. Spacing	TYPE	ALL INLETS		INLETS, H ≥ 5'		INLETS, H > 5'			
				L = 5'		10'		15'			
				No. Req'd	Length	No. Req'd	Length	No. Req'd	Length	No. Req'd	Length
401	11"	II	15	X	21	X	26	X	11	X	
402	11"	II	7	X	13	X	18	X	7	X	
403	9"	II	X	4'-0"	X	4'-0"	X	4'-0"	X	4'-0"	
405	6"	VI	11	6'-10"	21	6'-10"	31	6'-10"	11	6'-10"	
406	6"	VIII	7	8'-10"	7	13'-10"	7	18'-10"	7	8'-10"	
407	1/2"	II	X	5'-10"	X	10'-10"	X	5'-10"	X	5'-10"	
408	12"	II	3	6'-0"	3	11'-0"	3	16'-0"	3	16'-0"	
409	8"	II	6	5'-10"	6	10'-10"	6	15'-10"	6	10'-10"	
410	11"	VII	X	X	X	X	X	X	X	X	
411	11"	II	X	X	X	X	X	X	X	X	
412	11"	II	X	X	X	X	X	X	X	X	
413	9"	II	X	X	X	X	X	X	X	X	
501	3 1/2"	IV	11	3'-4"	22	3'-4"	33	3'-4"	22	3'-4"	
502	3/4"	III	X	X	X	X	X	X	X	X	
503	5 1/2"	II	5	3'-6"	16	3'-6"	27	3'-6"	6	3'-6"	
601	3/4"	2 1/2"	Y	2	8'-10"	2	8'-10"	2	8'-10"	2	8'-10"
8 LBS				1	5'-10"	1	10'-10"	1	15'-10"	1	15'-10"

* Variable, refer to Table TWO.
 * Include 18" No. 4 Bars (See Channel Layout Detail).
 * See Curb Face Assembly on Sheet I and Channel Layout Details on IN's sheet.

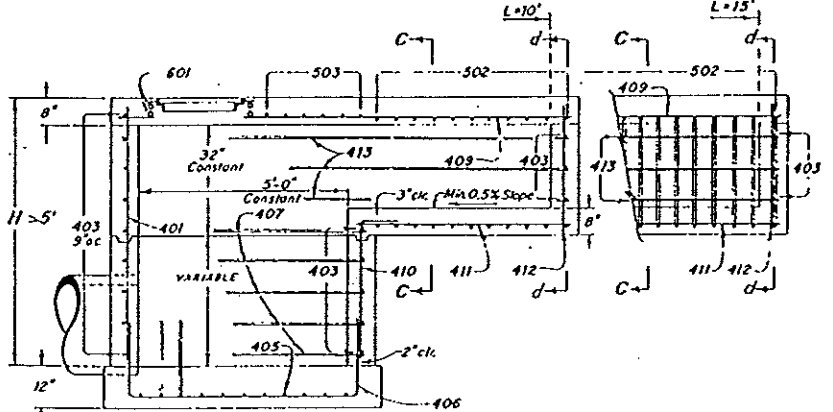
TABLE TWO - BARS AND QUANTITIES VARIABLE WITH H

H	Length			No. Req'd Regular		No. Req'd Drop Box		L = 5'		L = 10'		L = 15'	
	401	402	410	403	407	403	407	CuYd Conc.	Lb. Steel	CuYd Conc.	Lb. Steel	CuYd Conc.	Lb. Steel
3'-0"	2'-8"	1'-8"		10	7			3.2	285	5.3	497	7.4	706
3'-6"	3'-2"	2'-2"		10	7			3.4	305	5.7	528	7.9	747
4'-0"	3'-8"	2'-8"		12	9			3.7	326	6.0	559	8.4	786
4'-6"	4'-2"	3'-2"		12	9			3.9	334	6.4	571	8.8	803
5'-0"	4'-8"	3'-8"		14	11			4.1	354	6.7	602	9.3	844
5'-6"	5'-2"	4'-2"	3'-5"	16	13	15	6	4.4	375	6.0	607	7.5	840
6'-0"	5'-8"	4'-8"	3'-11"	16	13	16	6	4.6	382	6.2	616	7.7	850
6'-6"	6'-2"	5'-2"	4'-5"	18	15	18	8	4.8	402	6.4	637	7.9	870
7'-0"	6'-8"	5'-8"	4'-11"	20	17	19	10	5.0	423	6.6	658	8.1	887
7'-6"	7'-2"	6'-2"	5'-5"	20	17	20	10	5.3	430	6.9	664	8.4	897
8'-0"	7'-8"	6'-8"	5'-11"	22	19	22	12	5.5	451	7.1	684	8.6	917
8'-6"	8'-2"	7'-2"	6'-5"	24	21	23	14	5.7	471	7.3	702	8.8	934
9'-0"	8'-8"	7'-8"	6'-11"	24	21	24	14	6.0	479	7.6	711	9.1	944
9'-6"	9'-2"	8'-2"	7'-5"	26	23	26	16	6.2	499	7.8	732	9.3	964
10'-0"	9'-8"	8'-8"	7'-11"	28	25	27	18	6.4	520	8.0	749	9.5	982
10'-6"	10'-2"	9'-2"	8'-5"	28	25	28	18	6.7	527	8.3	759	9.8	991
11'-0"	10'-8"	9'-8"	8'-11"	30	27	30	20	6.9	547	8.5	779	10.0	1012

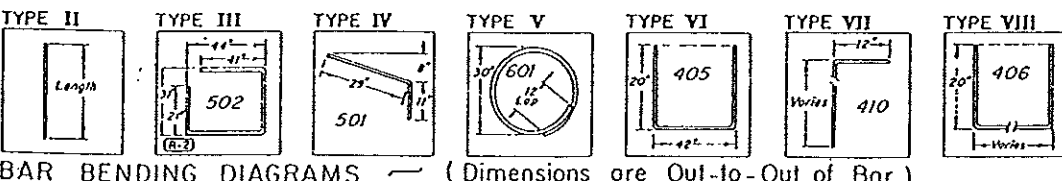
NOTE: For L=5', L=10' and L=15'
 REGULAR INLETS: Total quantities needed are OUTSIDE of the heavy block line.
 DROP BOX INLETS: Total quantities needed are INSIDE of the heavy block line.
 STEEL WEIGHTS DO NOT INCLUDE STRUCTURAL STEEL.



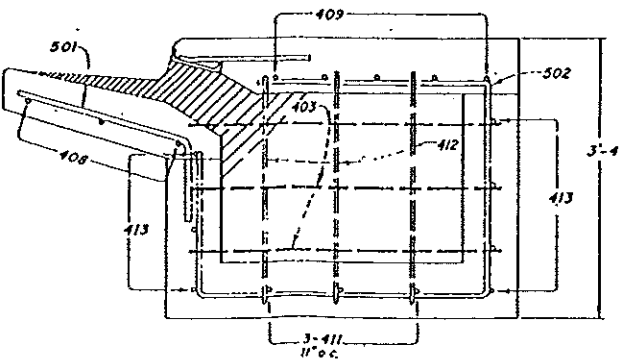
SECTION A-A REGULAR INLET



SECTION A-A INLET WITH DROP BOX - H > 5'

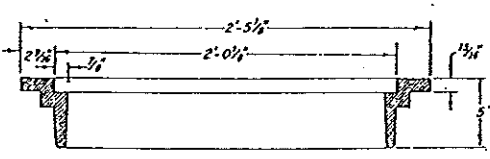
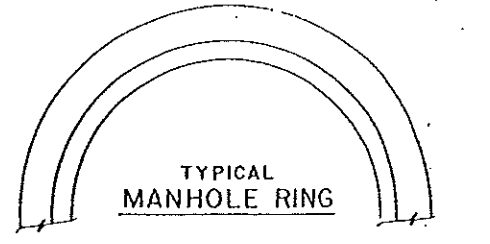
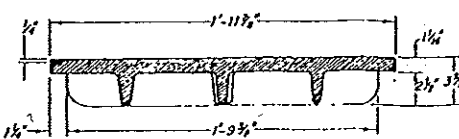
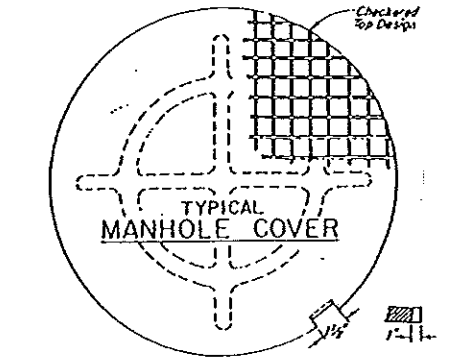


BAR BENDING DIAGRAMS (Dimensions are Out-to-Out of Bar)



(Dotted Bars are in Section d-d)

SECTIONS C-C & d-d



Approximate Weights:
 Cover = 125 lbs.
 Ring = 135 lbs.
 TOTAL = 260 lbs.

REFERENCE: Colorado Department of Highways Standard M-604-R

STORM DRAINAGE DESIGN AND TECHNICAL CRITERIA

CURB INLET TYPE R STANDARD DETAIL SD-1