

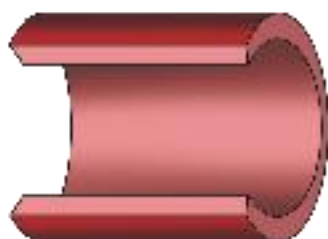
Keep doing the things you love.

Catch health problems before they go too far.

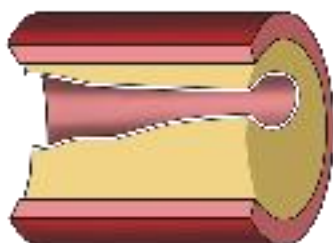
Life Line Screening offers a 5-screening package to provide peace of mind or early detection for risks of stroke and cardiovascular disease. The combination of these tests helps detect problems—**before you have symptoms** and while you and your doctor can still take action...so you can keep doing the things you love.



Plaque buildup can lead to cardiovascular disease, stroke and aneurysms.



A normal artery allows blood to flow through easily.



Plaque buildup in the arteries reduces your blood flow and can be dangerous if left untreated.

Register now to check the health of your arteries

5 Important Screenings for Only \$149 (Special Package Pricing)

- Carotid Artery Screening (Plaque)
- Heart Rhythm Screening (Atrial Fibrillation)
- Abdominal Aortic Aneurysm Screening
- Peripheral Arterial Disease Screening
- Osteoporosis Risk Assessment

Join the **10 million people** who have been screened.
We are coming to your neighborhood.

When: Monday February 19, 2024

Where: Bennett Community Center
1100 West Colfax Ave., CO 80102

To register for your appointment and to receive the special discount, please call toll-free **877-754-9648** or visit [LLSA.SOCIAL/HS](https://www.llsa.com/social/hs)